



## THE BUNGALOW 2.0 MODEL

1 Bedroom, 1 Bathroom, Full Kitchen, Sq. Ft: 399



### 399 SQ FT HOME, SLEEPS 2 ADULTS

### Turnkey

All units come "turnkey" with all appliances and hardware included.

All you will need is furniture.

### Dimensions

Units are 10.8 feet wide by 47 feet long.

### Appliances – Summit

24" wide refrigerator/freezer

2-burner cook top

Microwave

Dishwasher

Combo washer/dryer

### Additional Features

Fully covered front deck

Glass door entryway

Bedroom sized for queen bed, two side tables

Conduit ready for cable and cat six internet

Outdoor deck off the back with glass door that opens to deck

Insulation Values: Walls: R-22 | Roof: R-19 | Floor: R-19

### Special Features

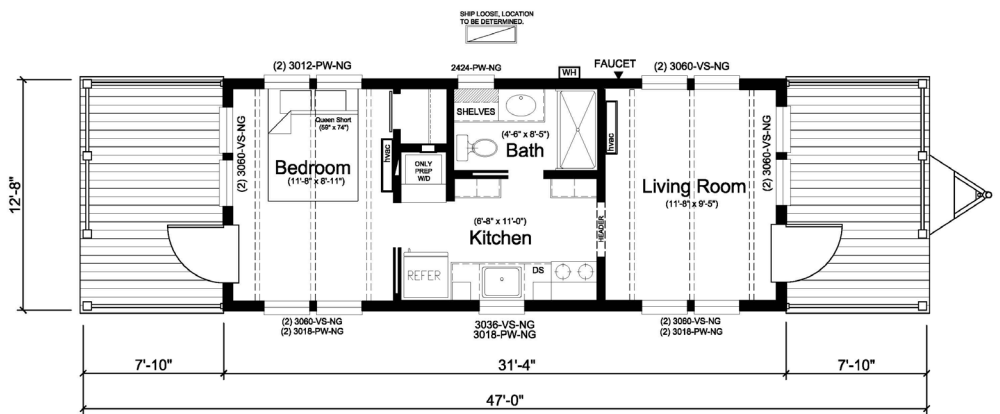
Khaki Brown 5.25" Hardie Lap Siding

White Trim

Dual Porches with Louvers

Galvalume Metal and Cedar Accent

2x6 Exterior Walls, 16" on Center



8316 Canoga Avenue Austin, Texas 78724  
(844) 503-3271 • VillageFarmAustin.com

