



THE ZOE MODEL

1 Bedroom with Loft, 1 Bathroom, Full Kitchen, Sq. Ft: 399



399 Sq Ft Home, Sleeps up to 4 Adults

Dimensions

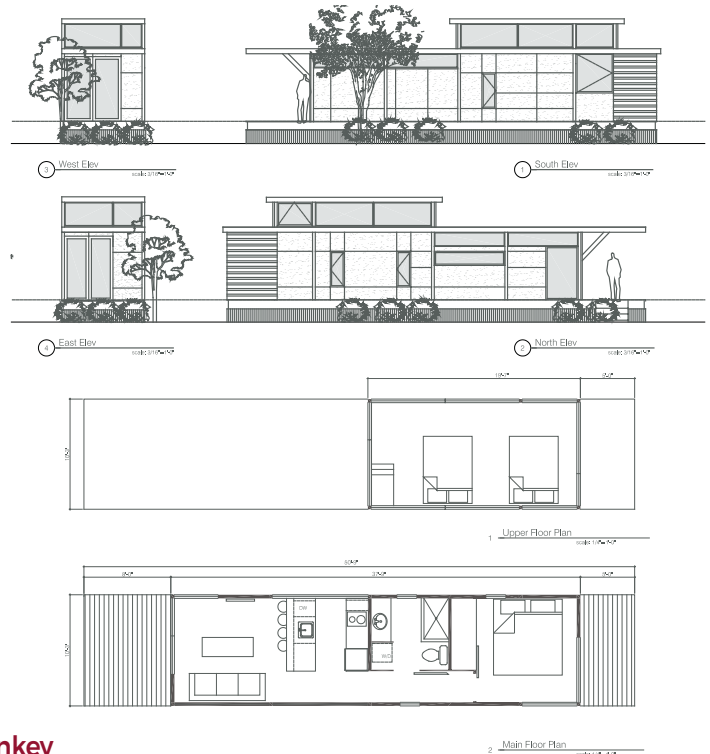
Units are 10'5" wide by 38' long. Units with decks are 51 feet long.

Appliances

- 24" wide refrigerator/freezer
- 2-burner cook top
- Microwave
- Dishwasher
- Full bar for dining
- European style glass shower and full tile in the bathroom
- Combo washer/dryer

Additional Features

- Solid surface counter tops paired with high grade 5/8" cabinetry and soft close doors and all the necessary hardware
- Fully covered front deck, sliding glass entryway
- Outdoor deck off the back
- Sliding glass door opens to deck
- Bedroom sized for queen bed, two side tables
- Full bar for dining
- Conduit ready for cable and cat six internet
- Insulation Values: Walls: R-22 Roof | R-22 Floor | R-13 Walls



Turnkey

All units come "turnkey" with all appliances and hardware included. All you will need is furniture.

8207 Canoga Avenue, Austin, TX 78724
(844) 503-3271 • VillageFarmAustin.com





THE ZOE MODEL

1 Bedroom with Loft, 1 Bathroom, Full Kitchen, Sq. Ft: 399

VALUE MODEL GUIDE

Built by Wheelhaus

Exclusively for Village Farm

Base price	\$112,495
Pella Impervia windows	\$5,000
HVAC	\$6,500
Custom built-in closet system	\$3,800
Washer/dryer combo	\$2,700
Bedroom wall sconces	\$700

TOTAL OPTIONS	\$18,700
VILLAGE FARM PACKAGE	\$22,750
TOTAL PRICE	\$153,945

NOTE: These prices are only good for our current inventory homes. Please add \$3,000-\$5,000 for Special Retail Orders. Prices, terms, specifications, and availability are subject to change without notice. Elevation and floor plans are artist renderings and are subject to change. See sales member for more details. 1/2019

