



## THE LOLA MODEL

1 Bedroom, 1 Bathroom, Full Kitchen, Sq. Ft: 399



### 399 SQ FT HOME, SLEEPS 2 ADULTS

#### Dimensions

Units are 10'5" wide by 38' long. Units with decks are 51 feet long.

#### Appliances

24" wide refrigerator/freezer

2-burner cook top

Microwave

Dishwasher

Full bar for dining

European style glass shower and full tile in the bathroom

Combo washer/dryer

#### Additional Features

Solid surface counter tops paired with high grade  $\frac{5}{8}$ " cabinetry and soft close doors and all the necessary hardware

Fully covered front deck, sliding glass entryway, outdoor deck off the back

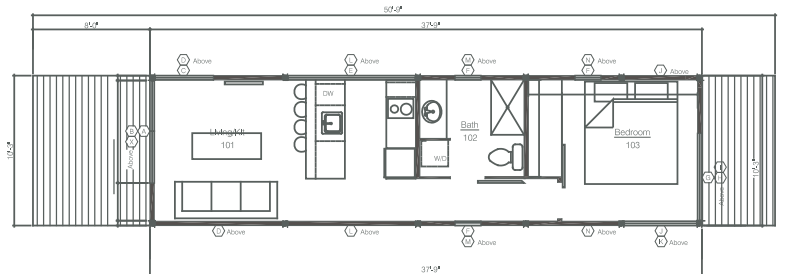
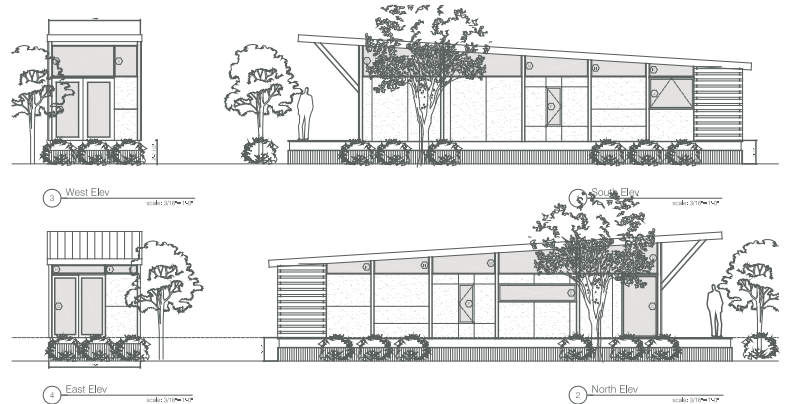
Sliding glass door opens to deck

Bedroom sized for queen or king bed, two side tables

Full bar for dining

Conduit ready for cable and cat six internet

Insulation Values: R-22 Roof | R-22 Floor | R-13 Walls



#### Turnkey

All units come "turnkey" with all appliances and hardware included. All you will need is furniture.



8207 Canoga Avenue, Austin, TX 78724  
(844) 503-3271 • VillageFarmAustin.com



# THE LOLA MODEL

1 Bedroom, 1 Bathroom, Full Kitchen, Sq. Ft: 399

## VALUE MODEL GUIDE

**Built by Wheelhaus**

**Exclusively for Village Farm**

Base price .....	\$89,995
Pella Impervia windows .....	\$5,000
HVAC .....	\$5,500
Custom built-in closet system .....	\$3,800
Washer/dryer combo .....	\$2,700
Bedroom wall sconces .....	\$700

<b>TOTAL OPTIONS .....</b>	<b>\$17,700</b>
<b>VILLAGE FARM PACKAGE .....</b>	<b>\$22,805</b>
<b>TOTAL PRICE .....</b>	<b>\$130,500</b>

**NOTE:** These prices are only good for our current inventory homes. Please add \$3,000-\$5,000 for Special Retail Orders. Prices, terms, specifications, and availability are subject to change without notice. Elevation and floor plans are artist renderings and are subject to change. See sales member for more details. 1/2019

